

Blue Vista residential complex

Location **Kyrenia, Esentepe**



About the project



Developer	Kardan Construction	
Start of sale	01.11.2023	
Key handover	2026	
Houses/blocks	6	
Building floor	2 Min	2 Max
Units total	6 - 3+1	

Distance to the sea - 550 m

Distance to key locations:
 Esentepe centre 3 min (drive) Public beach: 550m, Restaurants: 250m, Market: 2 min drive, Korenium Golf and Tennis club: 5 min drive, Esentepe centre - 3 min drive, Kyrenia centre: 25 min drive, Doğa college or English School of Kyrenia: 20-25 min drive, Ercan Airport: 40 min drive, Larnaca Airport: 90 min drive

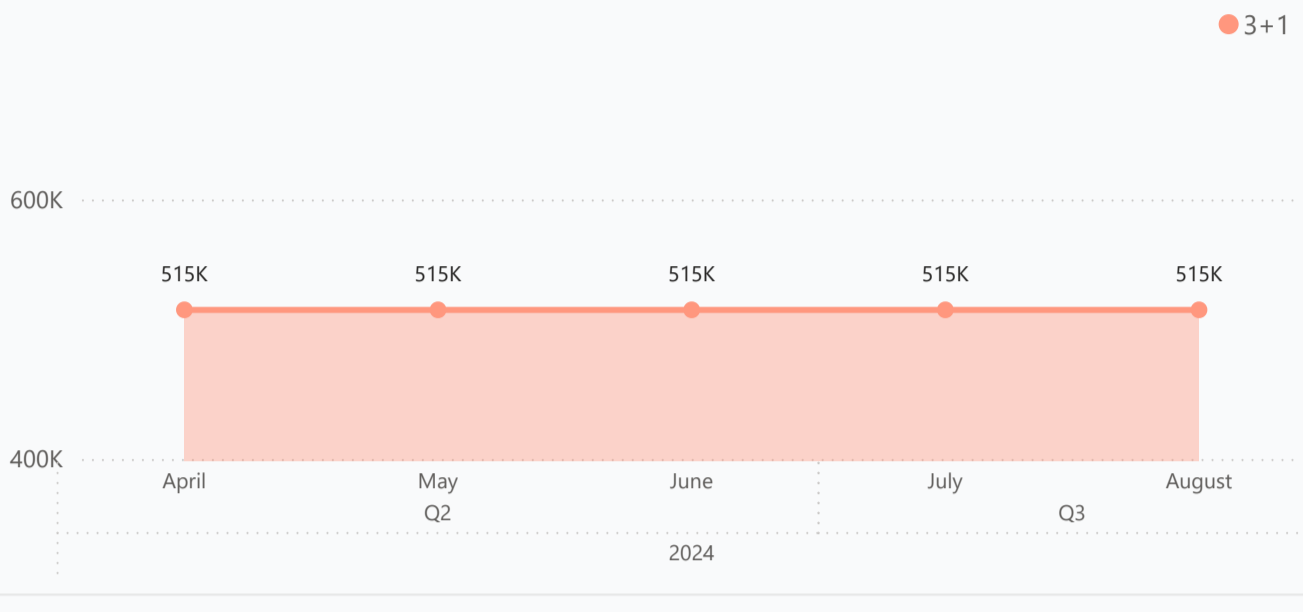
Blue Vista is a testament to living in harmony with fascinating surroundings and modernity. The villas project named "Blue Vista" adheres to international construction standards, ensuring the durability and quality of every aspect.

Complex infrastructure

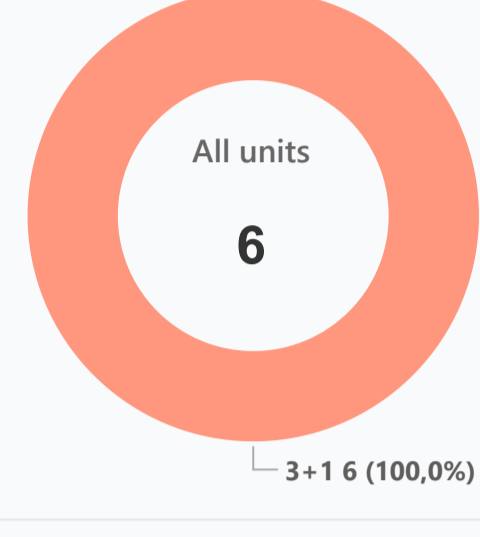
Closed territory ✔

Available units **6** / 6 total

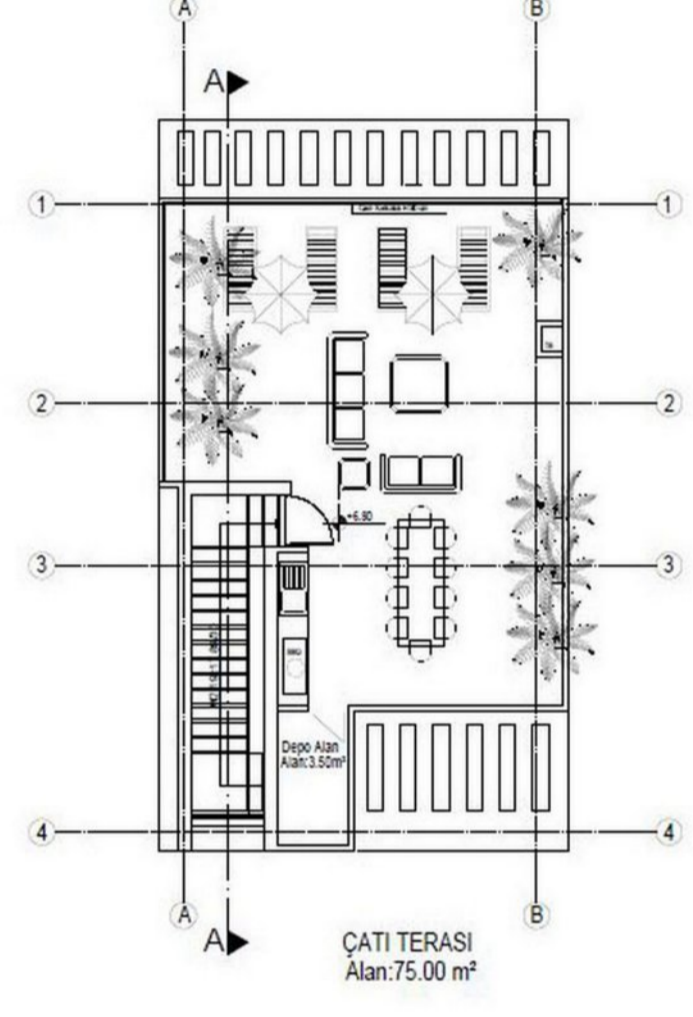
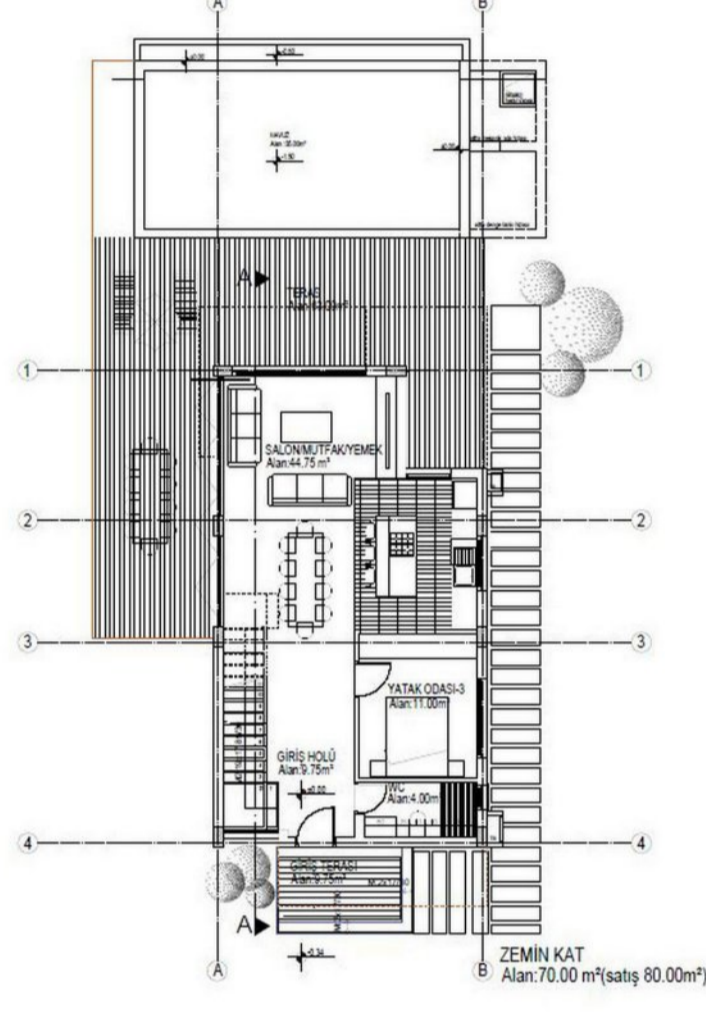
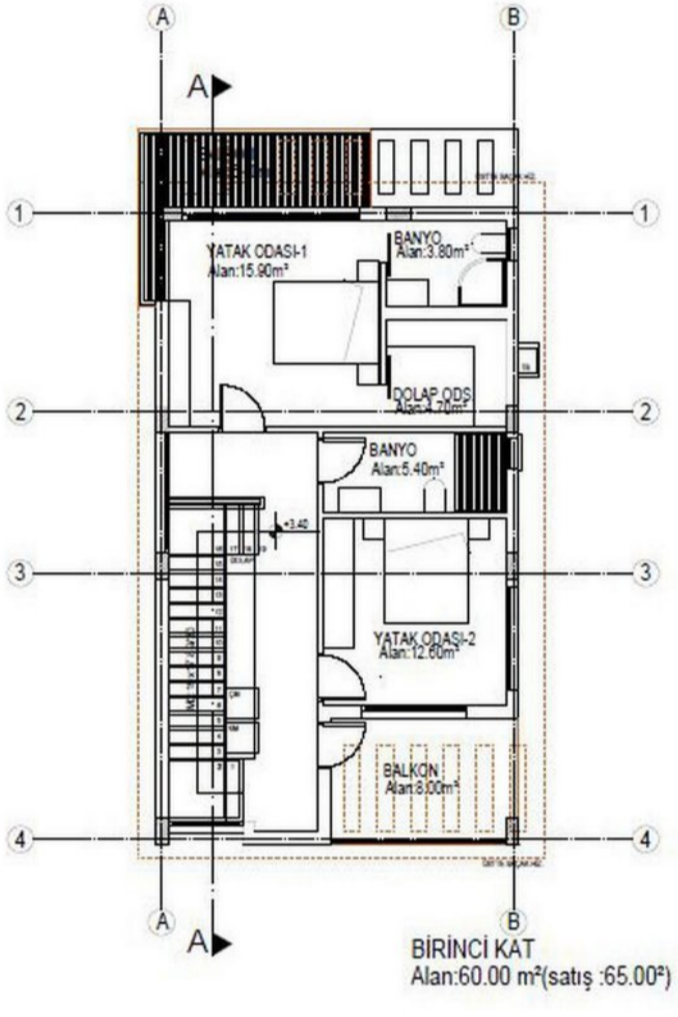
Median price per unit, K GBP



Structure of available units



Plans



3+1

Payment plans

Deposit (non-refundable) (Blank)

Option	Down payment	Installments months	Discount	Offer
Option 1	<input checked="" type="radio"/> (Blank)	(Blank)	(Blank)	-
Option 2	<input checked="" type="radio"/> Down payment	-	-	-
Option 3	<input checked="" type="radio"/> Down payment	-	-	-
Option 4	<input checked="" type="radio"/> Down payment	-	-	-

Special offer

Fully furnished design package

Rental guarantee

Trafo (Blank) GBP

Resale -

Maintenance fee -

Rental services -

Details

Bedrooms	Subtype	Block	Unit №	Floor	View	Bathroom	Internal area, sq. m	Balcony/ Terrace, sq. m	Rooftop terrace, sq. m	Garden, sq. m	Gross covered area, sq. m	Current price, GBP	Price per sqm, GBP
3+1	Villa	Villas	A4	0		3	145	14	76		235	449 950	1 915
3+1	Villa	Villas	A5	0		3	145	14	76		235	449 950	1 915
3+1	Villa	Villas	A3	0		3	145	14	76		235	479 950	2 042
3+1	Villa	Villas	A1	0		3	145	14	76		235	549 950	2 340
3+1	Villa	Villas	A2	0		3	145	14	76		235	549 950	2 340
3+1	Villa	Villas	B1	0		3	145	14	76		235	549 950	2 340

Interior specification



Interior specification

- Ceramic flooring ✔
- Double glazed windows ✔
- Fitted wardrobes in each bedroom ✔
- Laminate flooring in the bedrooms ✔
- Steel ladder with wood step ✔

Exterior specification



Exterior specification

- Glass fence balcony ✔
- Private Garden ✔
- Private pool ✔
- Terracing with inbuilt lighting & power sockets ✔

Location of complex

